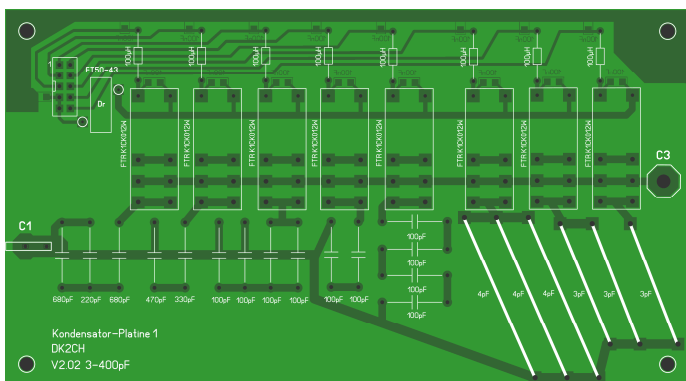


Platinenkalkulation DK2CH Symmetrischer Antennenkoppler (Stand: 08.03.2019)

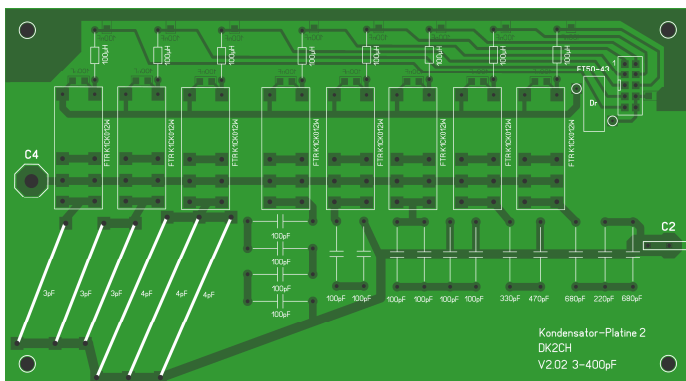
Symmetrischer-Koppler

DK2CH Kondensator-Platine 1	08,50 €
DK2CH Kondensator-Platine 2	08,50 €
DK2CH Spulenplatine 1	08,50 €
DK2CH Spulenplatine 2	08,50 €
DK2CH Spulenkörper (6 Stk)	03,50 €
DK2CH TP/HP Balun-Platine	08,50 €
DK2CH Steuergerät	12,50 €
DK2CH Steuergerät Controller	10,00 €
DK2CH Kabelprüfer (optional)	4,50 €
Versandkosten	04,99 €
Gesamtsumme	73,49 €

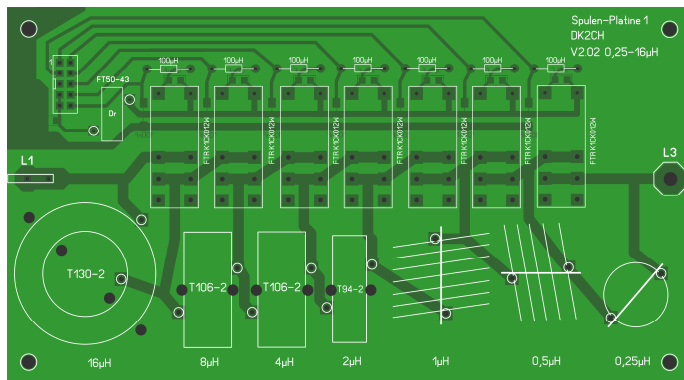
DK2CH Kondensator-Platine 1 (160mm x 88mm)



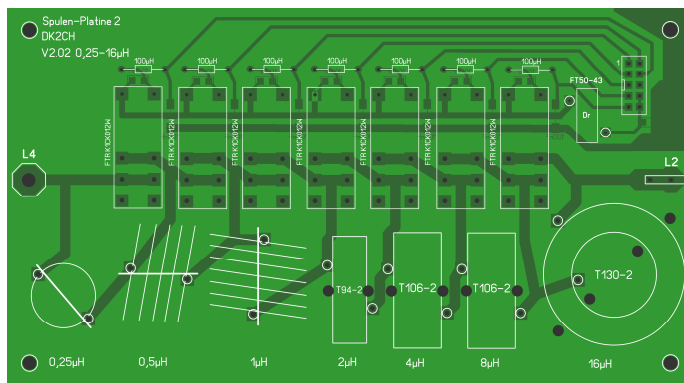
DK2CH Kondensator-Platine 2 (160mm x 88mm)



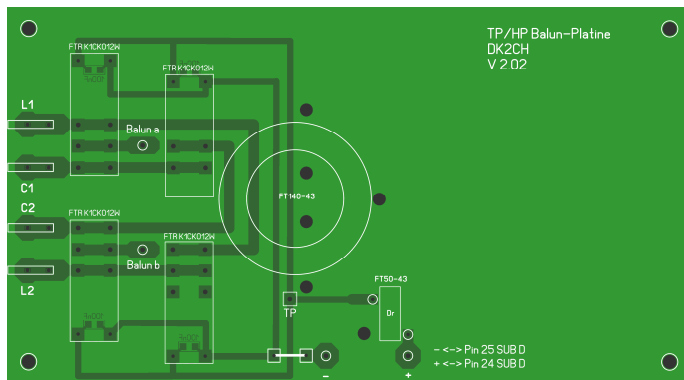
DK2CH Spulen-Platine 1 (160mm x 88mm)



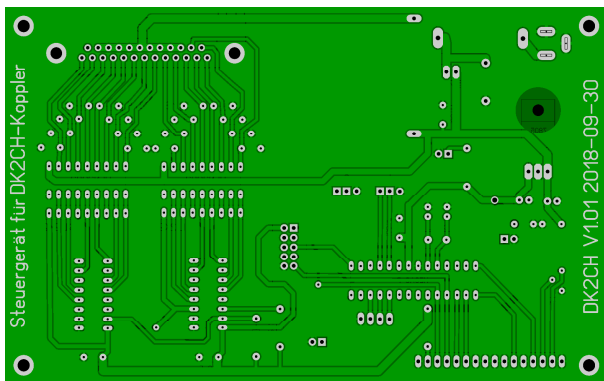
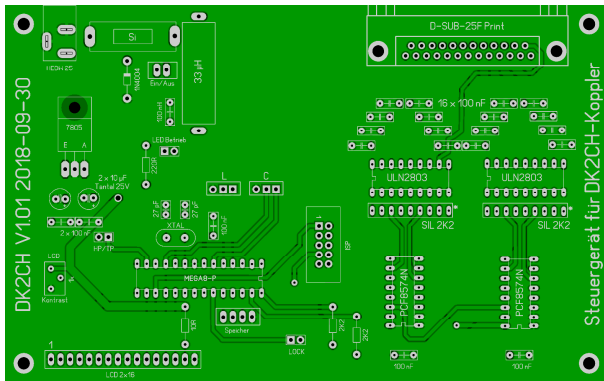
DK2CH Spulenplatte 2 (160mm x 88mm)



DK2CH Balun-Platine (160mm x 88mm)



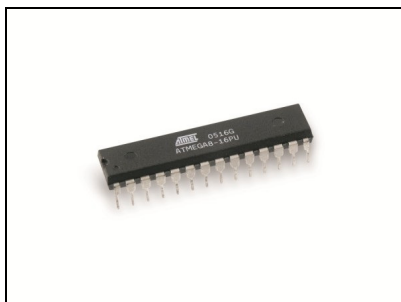
DK2CH Steuergerät (160mm x 100mm)



DK2CH Spulenkörper (FR4-Material)

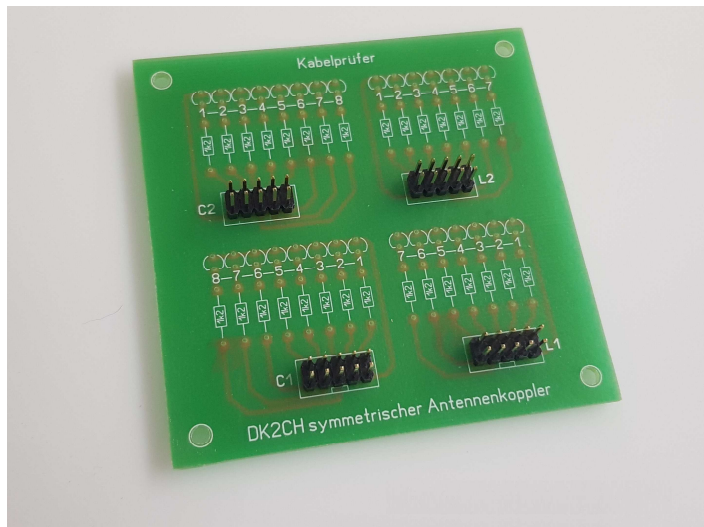


DK2CH µ-Controller



<https://www.dh4ym.de/>

DK2CH Kabelprüfer (80mm x 80mm)



Alle Platinen auch einzeln bestellbar!